

**Note: SwiftClean pen cleaner User's Manual**



- This product is intended for use as a cleaner for optical connector or adaptor.
- Please do no use for other purpose



**Menu**

1. Names and Descriptions of Parts
2. Method of Use
3. Compatible Connectors

## Product Enquiry

Email: [info@infinitecablesystem.com](mailto:info@infinitecablesystem.com)

Address: 東京都新宿区赤城下町 45 B-9

[www.infinitecablesystem.com](http://www.infinitecablesystem.com)

### 1. Names and Descriptions of Parts



- The remaining usage can be shown in the window.
- Avoid storing in locations with high humidity and high temperature
- Weight: 10g, thickness: 13mm
- Cleaning times: ~1000times

### 2. Compatible Connectors

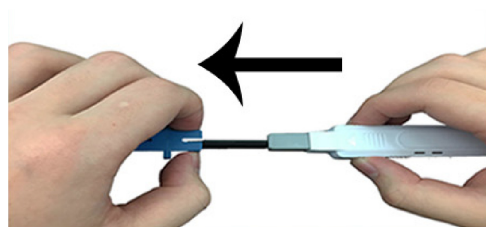
Model No.	Features	Connector/adaptor type
INFE312S	Connector + Adaptor cleaning	2.5 $\mu$ m
INFE312L	Connector + Adaptor cleaning	1.25 $\mu$ m

### 3. Method of use

To clean the adaptor/ bulkhead side:

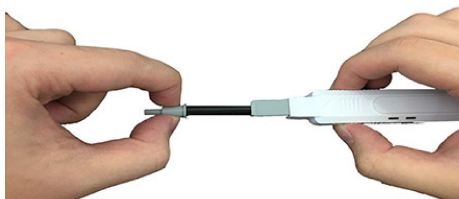


1. Remove the cap

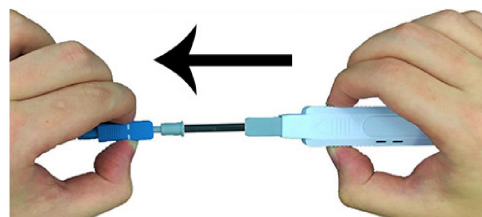


2. Push the cleaner to the adaptor/ bulkhead

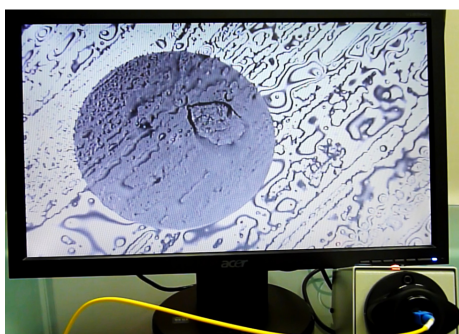
To clean the connector side:



1. Plug in the cap



2. Push the cleaner to the connector



Before Use



After Use